

**Rectangular  
Sans Serif  
& UX/UI Icons**

**B**

**O**

**X**

**R**

**TM**

# BOXR™ Type Specimen

R Q



## CONTENTS

### FAMILY PACK

BOXR™ Light

BOXR™ Regular

BOXR™ Medium

**BOXR™ Bold**

**BOXR™ Black**

*BOXR™ Light Italic*

*BOXR™ Italic*

*BOXR™ Medium Italic*

***BOXR™ Bold Italic***

***BOXR™ Black Italic***

**SQUARE**

Every dollar counts!

*Iced Coffee*

Locally-Grown, Organic Produce

**TINY HOME**

**COOKIE AND CREAM**

**REGELMÄßIG**

Un boxeador va una ronda más

*Horloge Électrique*

**ЯЗВИНД**

**Da Navegação**

På bænken under bøgen

*Jaren later vindt de gewone bouwvakker*

# BOXR™ Features Overview

NO OF WEIGHTS

5

NO OF STYLES

10

NO OF GLYPHS PER STYLE

1,175+

360 ICON GLYPHS



STYLISTIC ALTERNATES

RRЯЯNIIEEЭЭ



T T Q G

RECOGNIZE FRACTIONS VS. DATES

10/12+5/8 vs. 10/12/58

MULTIPLE AMPERSAND ALTERNATES

& & AND AND UND UND ET ET E E Y Y OG A A AN AN I 'N

200+ LANGUAGES SUPPORT

Љ Ñ Ğ Ü Å Ç Ê

AAÆÆBCCDEE33FFGGHIJKKLLMNNIOEPPQRRRЯ  
 SßTTUUVWXXYYYZaaæbccdefghijklmnoœpqrs  
 Bβtuuvwxyz1234567890①②③④⑤⑥⑦⑧⑨⑩½  
 ⅔¾⅞!/?/|\@#&£AND UNDET Y\$€£¥฿% ^\*+#{[]}{[]}  
 fflrrftyLATHTY%OFF OFF APR APR APY APY || 📺 📹 🔔 📞 📄 😊 📍 + - 🍁 🍁 🍁

*AAÆÆBCCDEE33FFGGHIJKKLLMNNIOEPPQRRRЯ*  
*SßTTUUVWXXYYYZaaæbccdefghijklmnoœpqrs*  
*Bβtuuvwxyz1234567890①②③④⑤⑥⑦⑧⑨⑩½*  
*⅔¾⅞!/?/|\@#&£AND UNDET Y\$€£¥฿% ^\*+#{[]}{[]}*  
*fflrrftyLATHTY%OFF OFF APR APR APY APY || 📺 📹 🔔 📞 📄 😊 📍 + - 🍁 🍁 🍁*

Standard Set

EXTRINSIC

Standard Set

Stylistic Set 1

EXTRINSIC

Stylistic Set 1

Stylistic Set 2

EXTRINSIC

Stylistic Set 2

Stylistic Set 3

EXTRINSIC

Stylistic Set 3

LIGHT

Rectangular *Rectangular*

LIGHT ITALIC

REGULAR

Rectangular *Rectangular*

ITALIC

MEDIUM

Rectangular *Rectangular*

MEDIUM ITALIC

BOLD

Rectangular *Rectangular*

BOLD ITALIC

BLACK

Rectangular *Rectangular*

BLACK ITALIC

*“Fix, Schwyz!”*

*quäkt Jürggen*

*blöod vom Paß.*



ONCE UPON A TIME,  
THE QUICK BROWN  
FOX JUMPS OVER  
A LAZY DOG. 🐱🐱🐱

**BOXR™** Essential Icons



120 × 3

*Numbers of Icons*



*standard*

*ss01*

*ss02*



standard

ss01

ss02

ITALIC

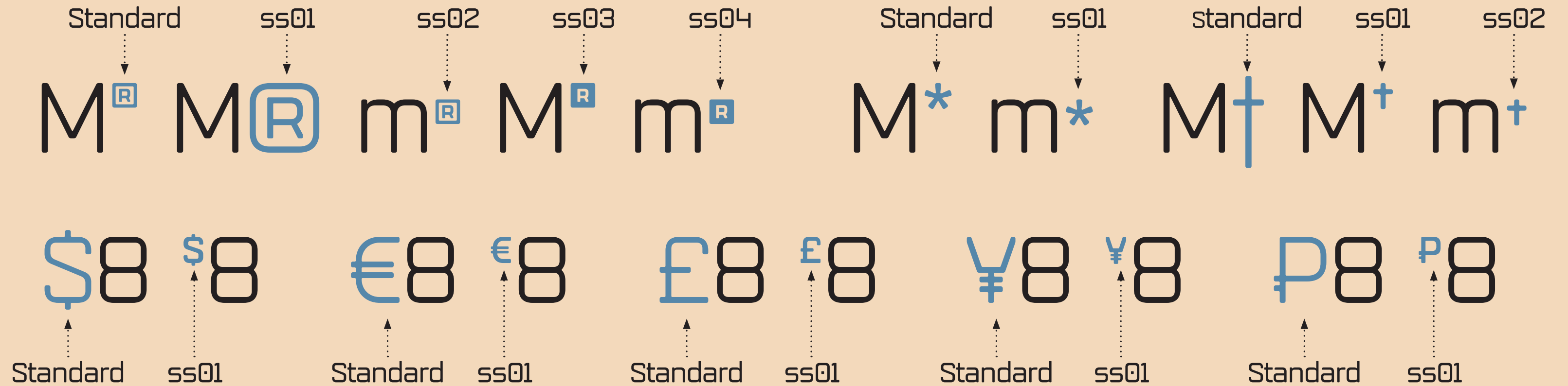
REGULAR

# BOXR™ Ligatures

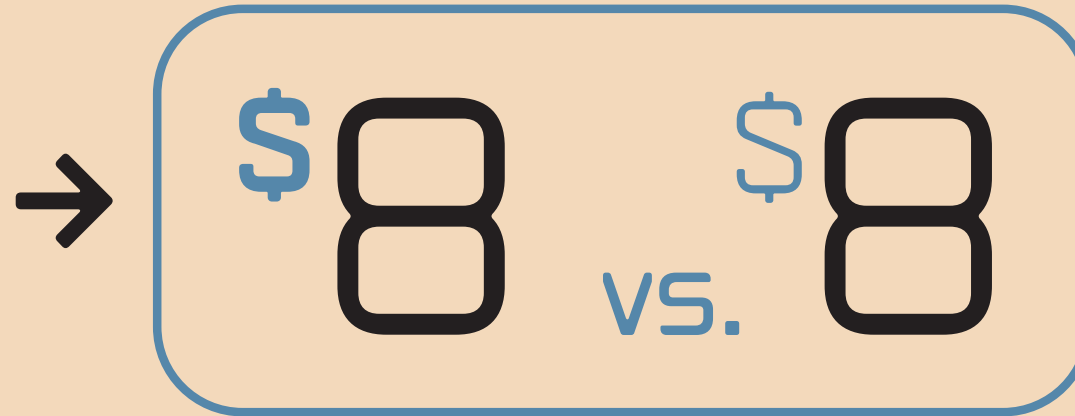
fb TE  
tt  
ff u  
rt LAI R TE Z A ttu  
ttu y ff tu th  
ff TE tr fr  
ff TH r  
% OFF

SEE BOXR'S COMPLETE GLYPH SET INCLUDING ALL AVAILABLE LIGATURES & DISCRETIONARY LIGATURES AT [R9TYPEDESIGN.COM](http://R9TYPEDESIGN.COM)

# MULTIPLE MARK & SYMBOL ALTERNATES

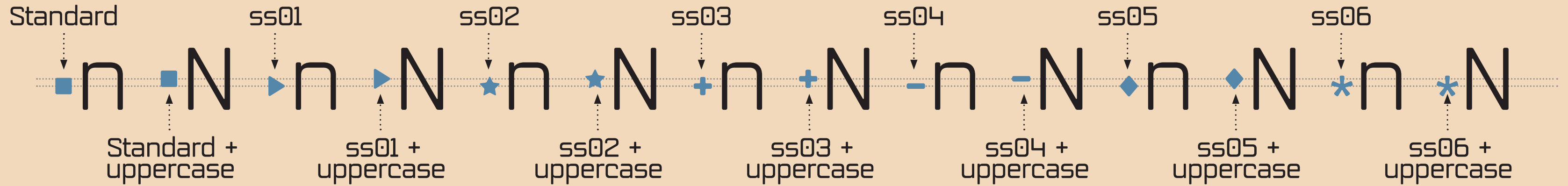


Alternated marks & symbols designed to visually match their own weights



Marks & symbols typesetted with smaller font size

# 7 BULLETS + CASE-SENSITIVE ALTERNATES



CASE-SENSITIVE vs. case-sensitive

**Occupta con rupt delitaquae** doluptatis nem quecu eum exernat accum volupti onsendis rescien temporem rent pate voluptatia nonsequam exceped ut etur? Cab ipsanducia vok luptat abore quasin nobita se veriae nullanda sant aspeli qui doluptae conet vidempor acide. Lorem ipsum ut wisi dolor et.

Borestia volorro que num et essit aut molorum quatas estim denda dolorum, con eati ut qui doluptur rem sitium aut relon pres molocest as et venduci endissumquam siti con enolemy mus utat ipsa nis dolore si dolupta tempore ratque venieni et statquam inisini hicient labo. Itatium que laudem niscit quene.

**BOXR™**

**TYPE**

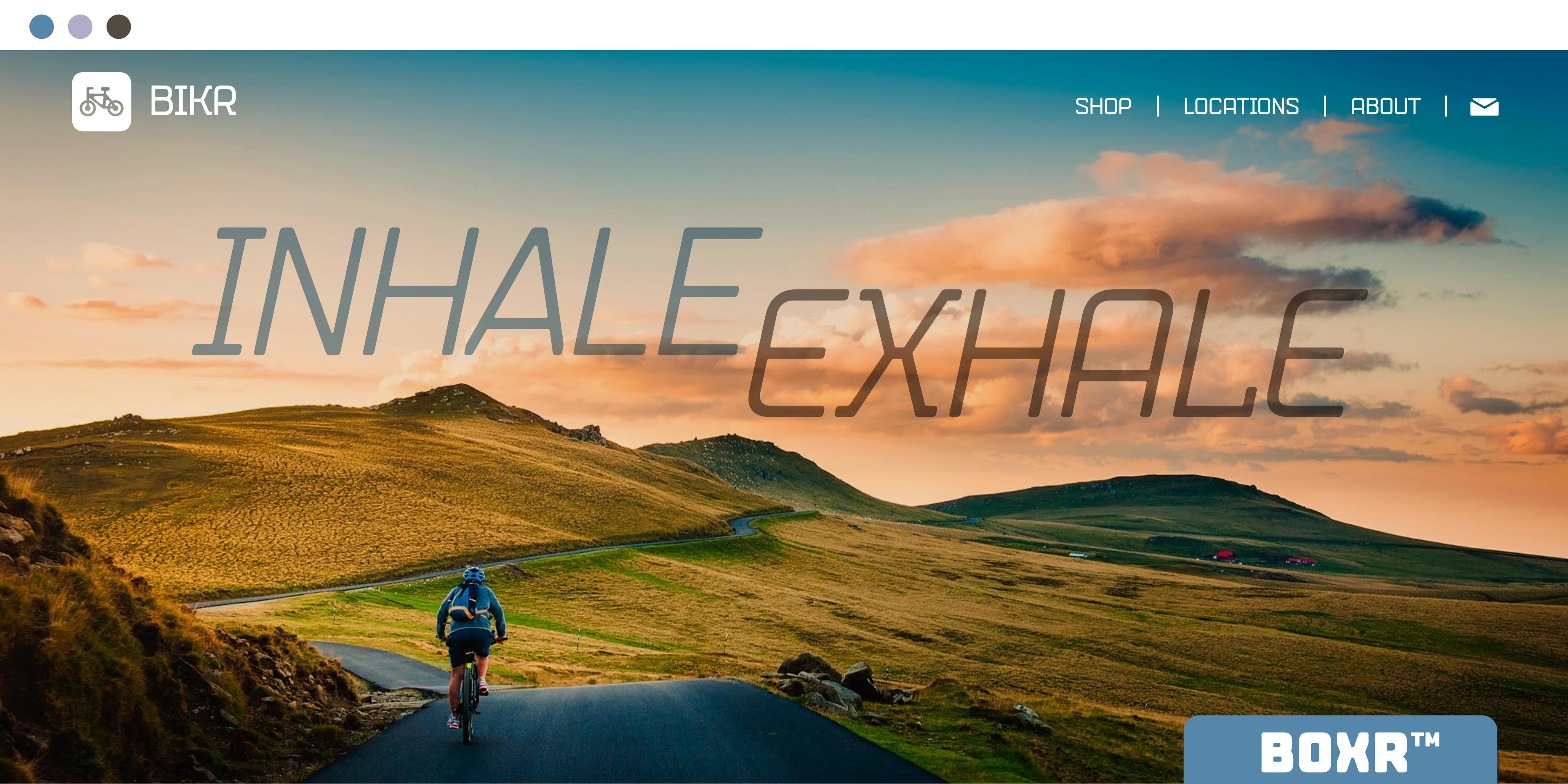
**DESIGN**



BIKR

SHOP | LOCATIONS | ABOUT | 

# INHALE EXHALE



**BOXR™**

# LIGHT AT THE END OF THE TUNNEL



**JOHN  
ROBERTS**

*This page is design  
with **Boxr™** Typeface  
by R9 Type+Design*

**M**ORE, TE DOLORE SIMPOS ILIS PRAE  
POCO CUSAMINO EOSSUS ESEQUI  
INULLORI VOLOR SOLOR AUT ESSE ET  
ABO. AQUE VENDUCID UTECAB IDAMOU MAXIM  
NE VOLOR AD QUO MOLU PTA CULLUPTUR?

**Quo tem fugiatur, quam quid molo et  
exerfer ferisi core paradae.**

Eos eos aribus simaio. Tem laborporecto  
cuptatio cus moet, vidit dolorro maio. Et pore  
commos velesciis sundae maxim exceperent  
autem am que essequi ut odia vitenis  
nonecta quaecto escieni qui distectenis  
quatiis et excepre num quiaspe llandis  
dolorpostion restrum fuga.

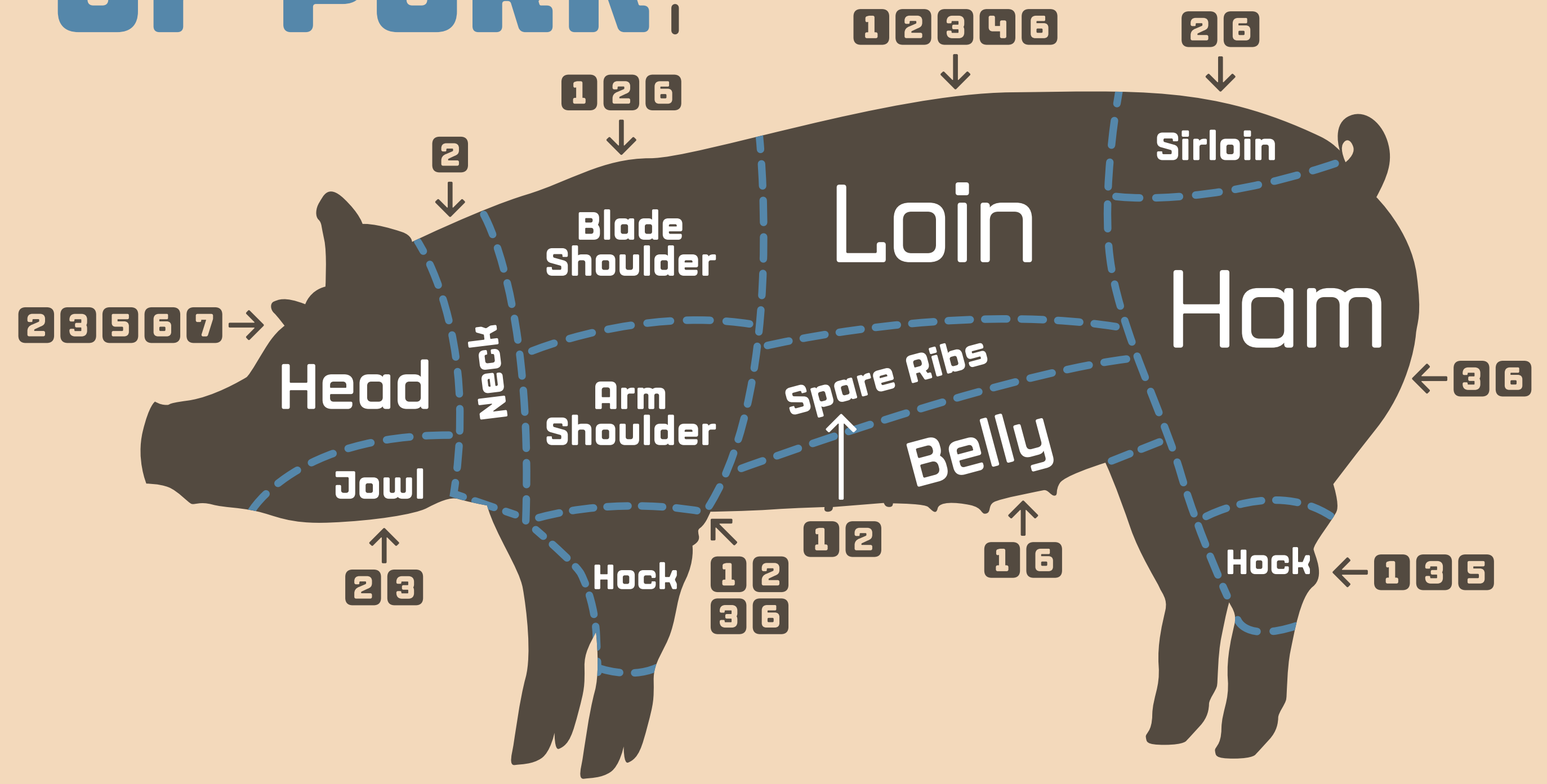
**BOXR™**

Ugit ulpari del in  
nulpa denis sinvent  
lorem ipsum dolor



# THE FOODIE'S GUIDE TO CUTS OF PORK

- 1 → Braise
- 2 → Grill/Broil
- 3 → Charcuterie
- 4 → Pan/Skillet
- 5 → Stew
- 6 → Roast
- 7 → Pickle



**GASTOWN FARMERS MARKET**

**LARGE | GROS | 12 EGGS |**  **CANADA GRADE A**

BEST BEFORE →  
MEILLEUR AVANT →

**ORGANIC | BIOLOGIQUES**

